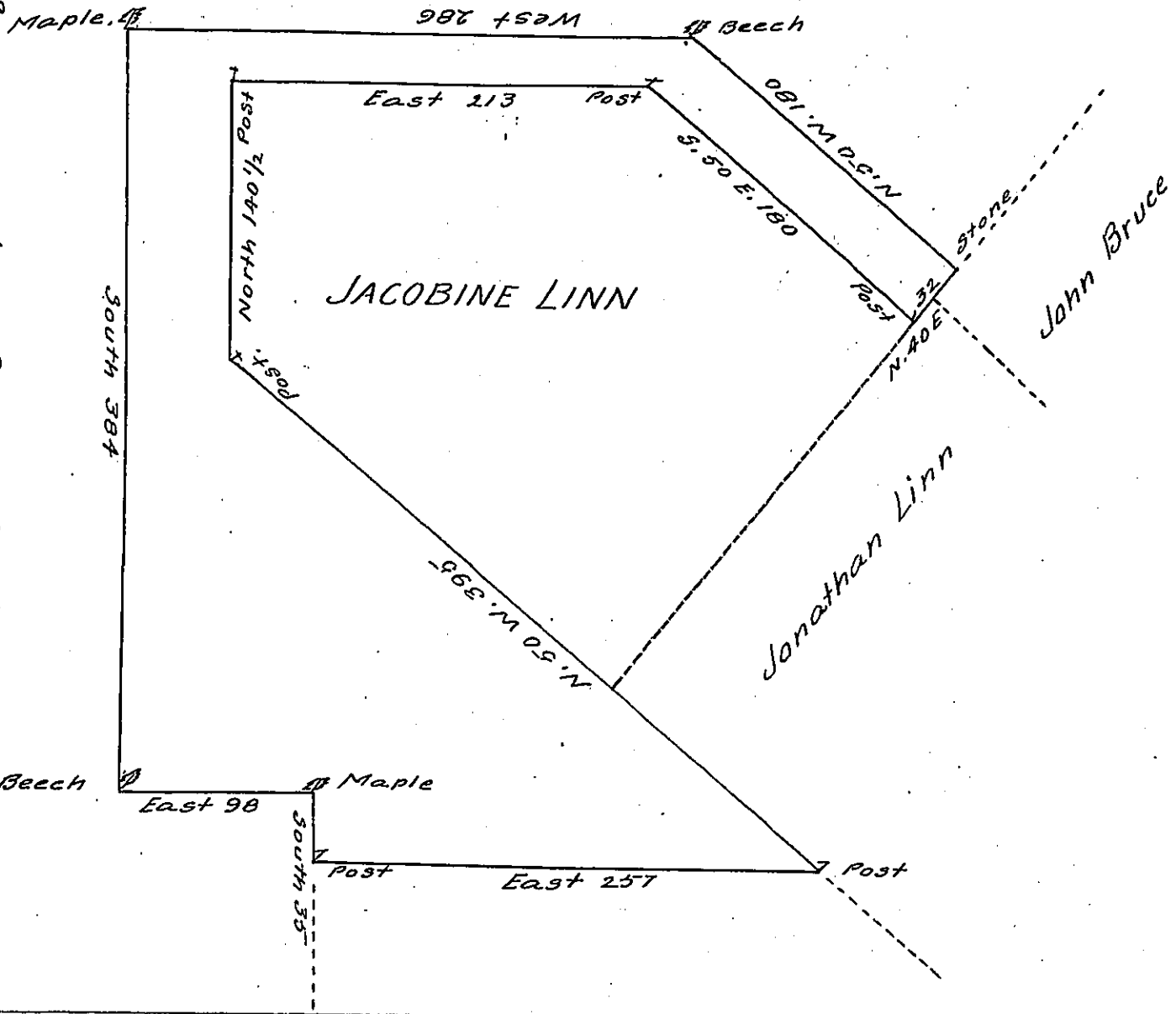


land surveyed by William Simpson for Henry Drinker.

Surveyed by William Simpson for Henry Drinker.



BY VIRTUE of a warrant dated the 7 November 1798 Surveyed
 the 14th October 1793 to Betsy Green the above described tract of -
 land situate on the small head branches of Wallingpaupack
 in the County of Northampton Containing four hundred and
 two Acres & the allowance of six $\frac{1}{2}$ Cent &c.

H. Geo. Palmer D.S.

To Daniel Brodhead Esquire
 Surveyor General.

IN TESTIMONY that the above is a copy of the original remaining on file in
 the Department of Internal Affairs of Pennsylvania, made
 conformably to an Act of Assembly approved the 16th day of
 February, 1833, I have hereunto set my Hand and caused
 the Seal of said Department to be affixed at Harrisburg,
 this Twenty Seventh day of February 1905.

James R. Parsons
 Secretary of Internal Affairs.